

The logo features the letters 'WD' in a large, bold, red font. Below it, the words 'BALL & ROLLER BEARINGS' are written in a smaller, black, sans-serif font. The background is a vibrant red with a complex, glowing technical design. This design includes a circular grid, various lines, and points that resemble a technical drawing or a bearing's internal structure. The overall effect is one of precision and industrial strength.

WD
BALL & ROLLER
BEARINGS

COMPANY INTRODUCTION

A BRIEF INTRODUCTION



Founded in August of 2000, WD is a technology-oriented group, specialized in R&D, manufacturing, sales and service of high quality bearings.

In order to make WD as a symbol of quality, we invested a lot in advanced CNC equipments and the complete set of precision inspection devices, committed ourselves to building a high quality employee team and brought in advanced technique of manufacturing and management from USA, Germany and Italy. We have strictly implemented ISO 9001 and 14001, as our respect to quality control and environment protection.

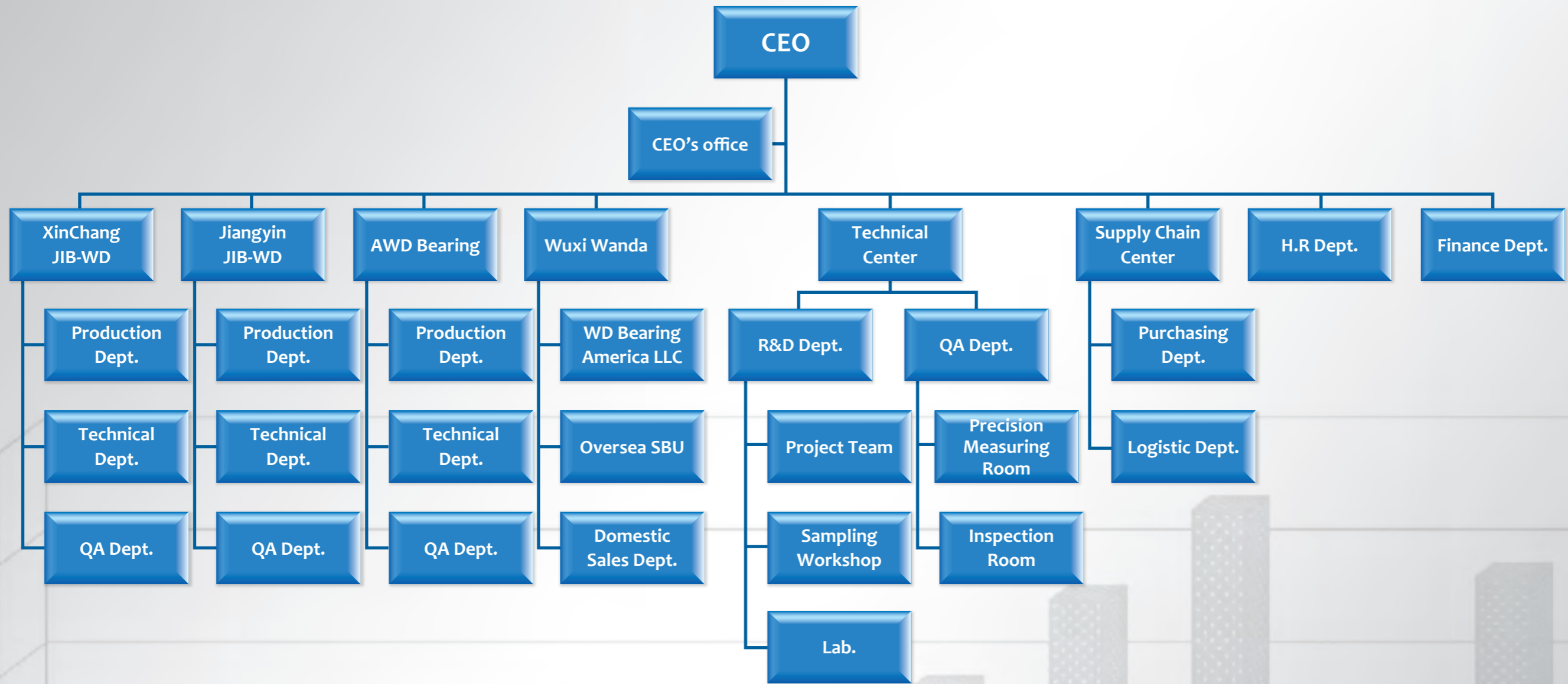
Our precision and customized bearings are mainly supplied to OEM customers in many industries, such as gearbox, electric motor, construction machinery, material handling equipment and steel mills, etc.. In the meantime, our complete supply chain makes it possible to supply customer almost full range of standard bearings from I.D 2.5mm up to O.D 6000mm.

Much more than the product itself, our professional engineering and sales team will be very pleased to take good care of every customer's requirement, and provide cost effective solutions as well as our one-stop service.

"Quality Creates Value" now is a motto for every WD member. We are ready to sincerely serve our global customers for long-term and win-win cooperation.

1. AWD new plant
2. JIB-WD precision Co.,Ltd
3. WD Bearing America, LLC
4. Xinchang JIB-WD precision Corporation
5. Wanda Industrial
6. Corner of office
7. Tian'an Bldg.

ORGANIZATION



COMPANY PHILOSOPHY

Our Vision
 Become your best bearing expert

Company slogan
 "Quality Creates Value"

- Quality of employee: persistently improve ability and cultivation;
 - Quality of product: Right quality for the right application;
 - Quality of service: excellent and thoughtful service to satisfy customer's need;
 - Quality of environment: enhance the idea of environment protection and decrease the resource waste.
- Comprehensively improve the quality on staff, products, service and environment is the important approaching to creating more value for staff, company, customers and the society and to realizing our harmonious development.

Our mission
 Manufacture and popularize WD bearings with reliable quality, commit to the smooth running of global mechanical industry and create more value for our customers.

- Management guideline*
- Respecting human as our prima capital;
 - Focusing on our bearing profession;
 - Creating and sharing together with our partners (staffs);
 - Taking the customers' satisfaction of the products and service as our basic principle;
 - Establishing the recognition of WD brand and pursuing the long-term development.

PRODUCTION

Continuous investment on technique upgraded machineries and human resources are power of our development.



CNC grinder



Automatic hot-rivetting machine



CNC lathe



Ultrasonic washing



CNC centerless grinding



Laser marking

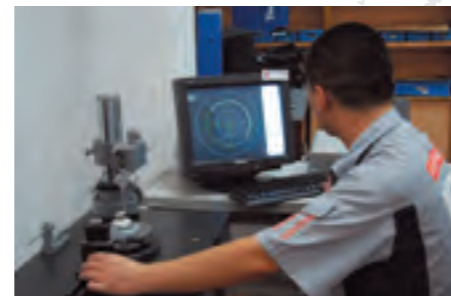
QUALITY ASSURANCE



High-precision projection



Careful quality control



Roundness



100% noise testing

Quality is the life of WD. To insure our quality compliance with planned standard, the following measures are taken:

- Factories and qualified suppliers run in accordance with ISO9000 and TS16949 system.
- Keep investing the latest high precision inspection equipments for our inspection center.
- Enhance our R&D and QA team, who is regarding WD's quality guarantee.
- In addition to regulated inspection of entry-exit inspection and quarantine bureau, strict inspection will be carried out in WD inspection center before delivery.
- Cooperate with national bearing institute and lab for important projects.



ISO14001:2004 Certification
Holds Certificate No: EMS 90886



ISO9001:2008 Certification
Holds Certificate No: FS 90884

TECHNICAL SUPPORT

Technical team

WD technical team is constituted by experienced and skillful bearing R&D engineers and technicians. Based on product design, technique R&D and application technique research, WD's technical support also considers the product specialty of different area and types, then enabling WD technical team to suit for diversified developing request, implement the development process more deeply and widely, and provide comprehensive service including demand analysis, product selection, special product R&D and after-sale technical support; then further improve the product's value effectiveness.



Technical functions

• Product development

WD product development is based on the customer's demand and the development process is quite flexible. During product development, based on customer's application, WD technical team, by doing thorough technical calculation and product design, section, technique R&D, etc. will prepare a technical solution finally to realize the applicability of the products and provide an optimized solution of higher performance.

• Application technology research and service

WD application technology development is mainly applied in engineering project development, after-sale technical service and technical training. Through WD's research on bearing application technology and the accumulation of application experience, WD is able to support you with the technical training on product development, installation, maintenance and problem-solving, committing to decrease your development difficulty and improve your efficiency; then realize the maximum value of WD products.

We believe that you would like to get the right design from the very beginning and can foresee potential problems. We would provide engineering consulting services related to our bearing products, including bearing selection, design optimization and the root cause analysis. Root cause analysis - finding out why the design has not played the expected function- is another area where our consultants can support you. WD application engineers will be pleased to help you solve the problems faster with their rich experience.

• Bearing mounting and lubrication

The bearing lifetime will be seriously affected by improper mounting or lubrication. With the knowledge and experience in these areas, we can provide you corresponding support.



Working environment

The space for R&D and lab has reached 800m² in WD new headquarter building, and is adjacent to WD production base.

R&D methods

- By using the latest engineering software, WD is able to provide calculating & analog service to realize the optimized product solution.
- WD precision measurement lab is equipped with advanced measuring tools to help engineers fully understand the product and support the various test during the developing process.
- WD implement bearing life test to verify the reliability of our products.
- Cooperation with the national bearing institutes.

CUSTOMER SERVICE

Choosing WD, you will enjoy our value-added and one-stop services as follows:



- **Wide product range:**

We can provide almost all kinds of bearings, ranges from I.D 2.5 mm up to O.D 6,000 mm.

- **Customized solution:**

We can design and develop special bearings or provide economical solution according to your application. We are able to develop over 300 new bearings every year.

- **Cost-saving solution:**

With reliable quality and reasonable price, we are supporting our global OEM customers with fruitful cost-saving programs. Our OEM customers, who were all used to buy only European or American branded bearings, cover those industries of material handling system, gear box, electrical motors, steel mills, automobiles and so on. Our cost-saving programs have been widely approved by our OEM customers.

- **Supply chain management:**

Beside our bearing products, we can also help you to purchase other industrial components, control quality and do assembly, then to further help you achieve higher operation efficiency.

- **Application technical service:**

WD's technical team is much experienced in automobile bearings, industry bearings, and even aerospace bearings. We are able to provide support on bearing selection, design optimization, product development, bearing mounting, bearing maintenance, lubrication and etc.

- **Technical training:**

We can provide technical training for bearing selection, design, production technique, quality inspection, mounting and maintenance, etc. to our global sales partners or end-users.

- **Quality control service:**

With our comprehensive inspection methods, our quality control covers material, heat treatment, dimensions, profile, roughness, clearance, noise and so on. Our experienced QA team is able to control quality whatever during the production, or before the shipment, to guarantee that our customer will only receive quality, but not trouble.

- **Flexible production schedule:**

Relying on our ERP management and fast flexible production pattern, we are able to control our lead time in 45-60 days for standard products, and in 60-90 days for special and extreme-large size bearings. In case of urgent demand, our emergency production unit will guarantee your business free of trouble.

- **JIT delivery:**

Based on your forecasting, we would prepare inventory in our centre warehouses in China, EU and USA, then to provide your global subsidiaries with JIT delivery service.

- **Logistic service:**

Cooperating with world leading logistic partners, our professional international service team will be pleased to offer you our best service.

- **Local service:**

Our over 20 global sales partners are ready to serve you as your local bearing expert, providing you with efficient, convenient and professional before-sale, in-sale and after-sale services.

- **Credit service:**

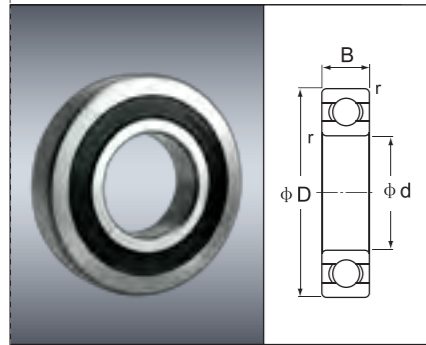
We keep credit record for all of our customers, and cooperate with China Export & Credit Insurance Corporation. You are able to enjoy a certain level of payment credit based on your record, to help you enlarge your business.

NON-STANDARD AND PRECISION BEARING SERIES

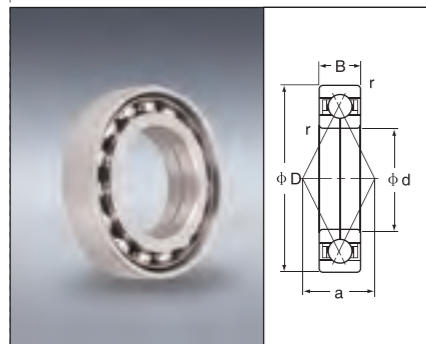
- Precision Cylindrical Roller Bearings
- Precision Tapered Roller Bearings
- Rolling Mill Bearings
- Bearings for Material Handling System
- Spindle Bearings
- YRT Rotary Table Bearings



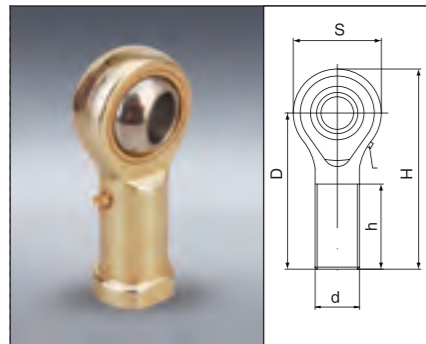
STANDARD BEARING SERIES



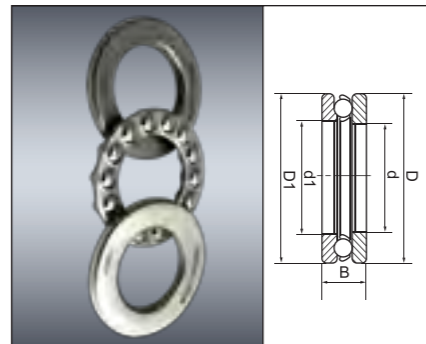
Deep groove ball bearings



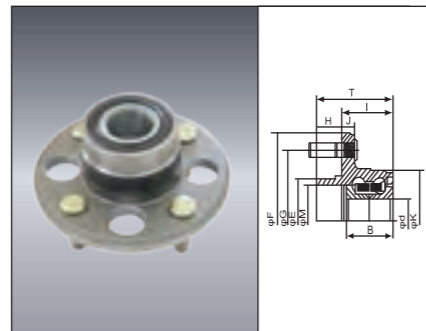
Four-point contact ball bearings



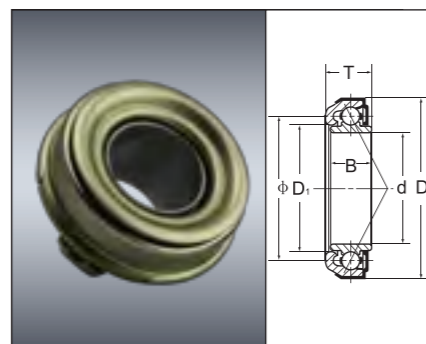
Rod end



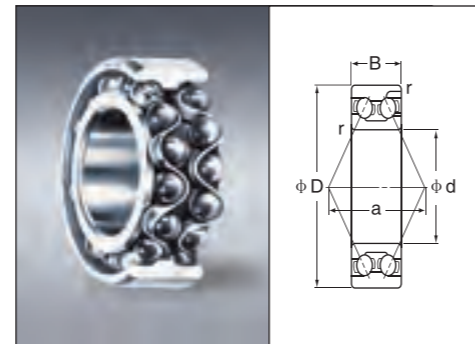
Thrust ball bearings



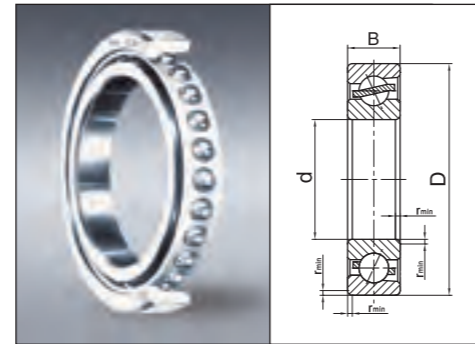
Automobile wheel hub bearings



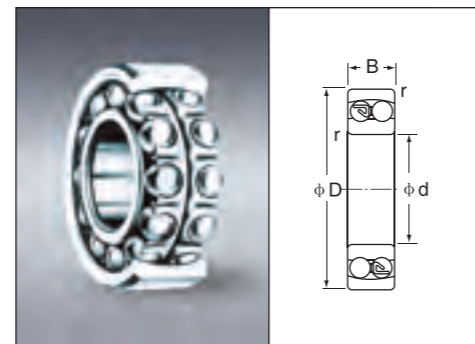
Automobile clutch release bearings



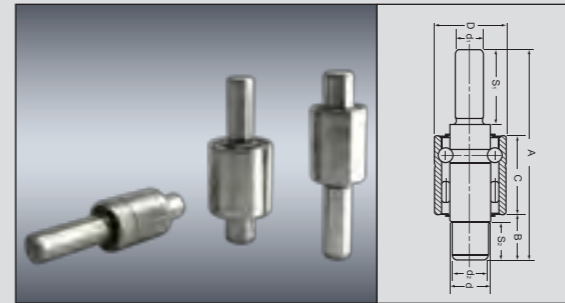
Angular contact ball bearings - double row



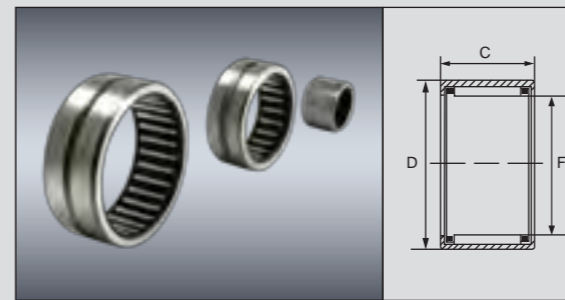
Angular contact ball bearings - single row



Self-aligning ball bearings



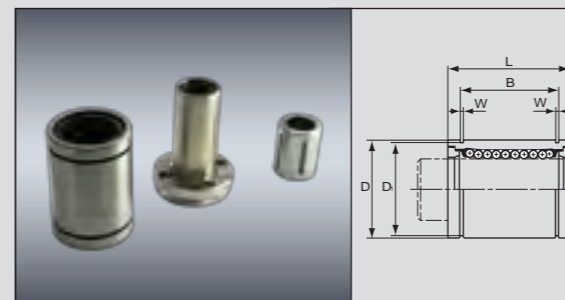
Automobile water pump bearings



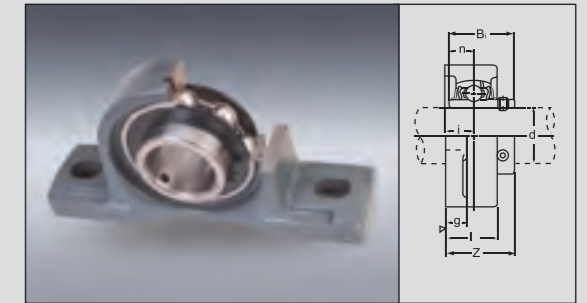
Needle roller bearings



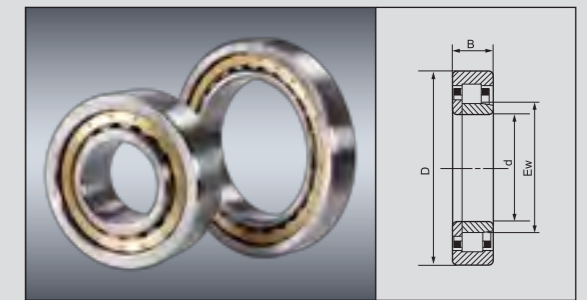
Tapered roller bearings



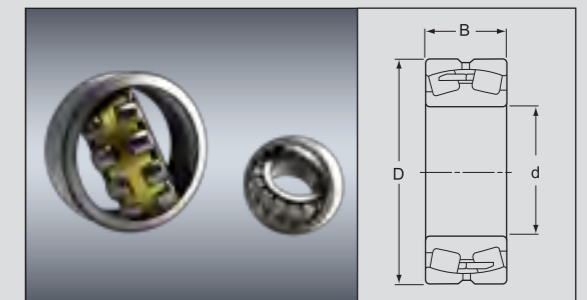
Linear motion bearings



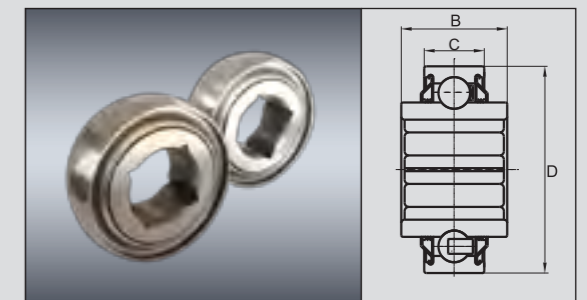
Bearing Units



Cylindrical roller bearings



Spherical roller bearings



Agricultural Bearings

TYPICAL APPLICATIONS

Material Handling System

- forklift, trolley, spiral arm crane, bridge crane, portal crane, shocker, chute conveyor, roller conveyor, chain conveyor, belt conveyor, trolley conveyor, sorting and picking conveyor, storage equipment, etc.

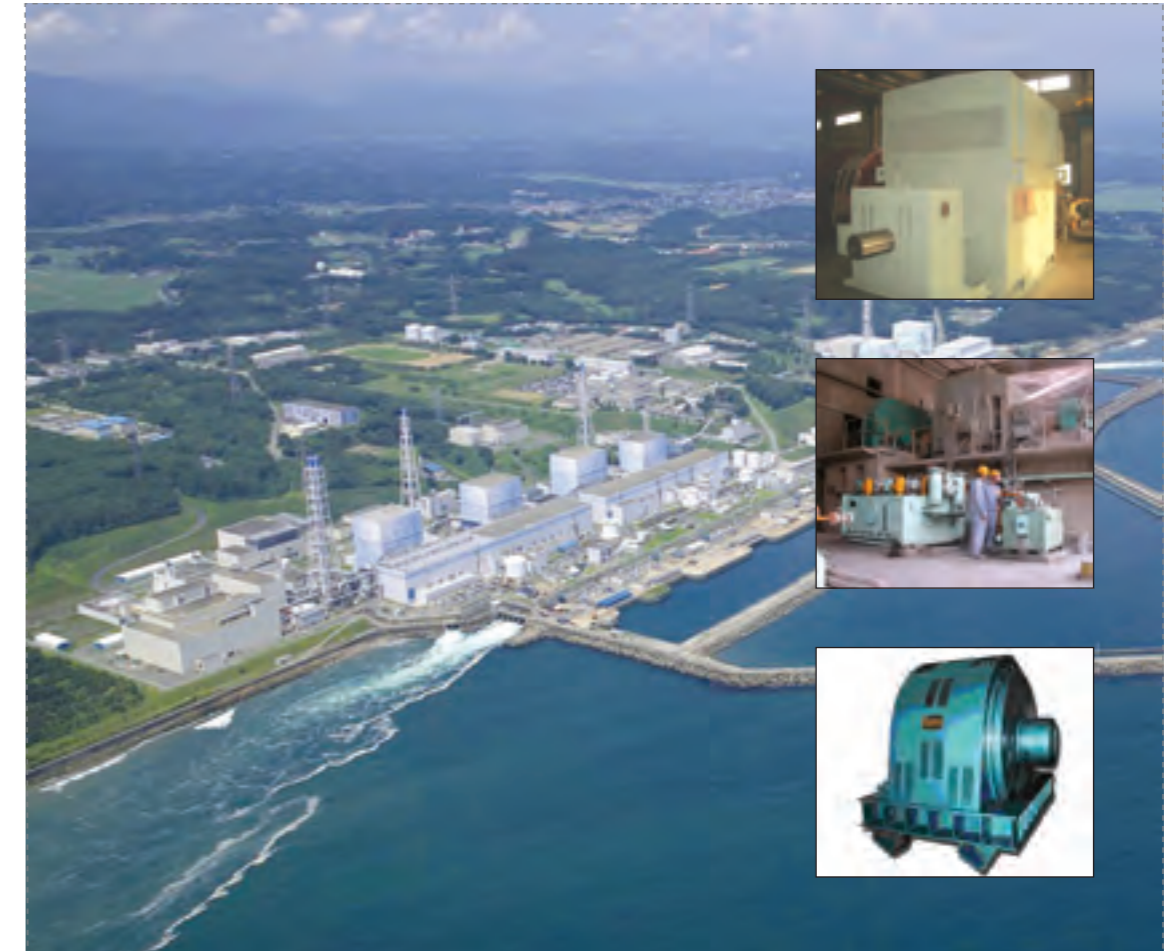


- **Featured WD Products:** deep groove ball bearings, thrust ball bearings, combined bearings, big roller chain pulley bearings, cylindrical roller bearings, angular contact ball bearings, full complement cylindrical roller bearings, needle roller bearings, precision plastic coating bearings.



Motors industry

- large motor, stepper motor, industrial DC motor, synchronous motor, asynchronous motor, etc.



- **Featured WD Products:** precision deep groove ball bearings, precision cylindrical roller bearings.



TYPICAL APPLICATIONS

Gear box industry

- general gear box, turbine gear box, epicyclic gear box, industrial gear box, umbrella tooth gear box, etc.

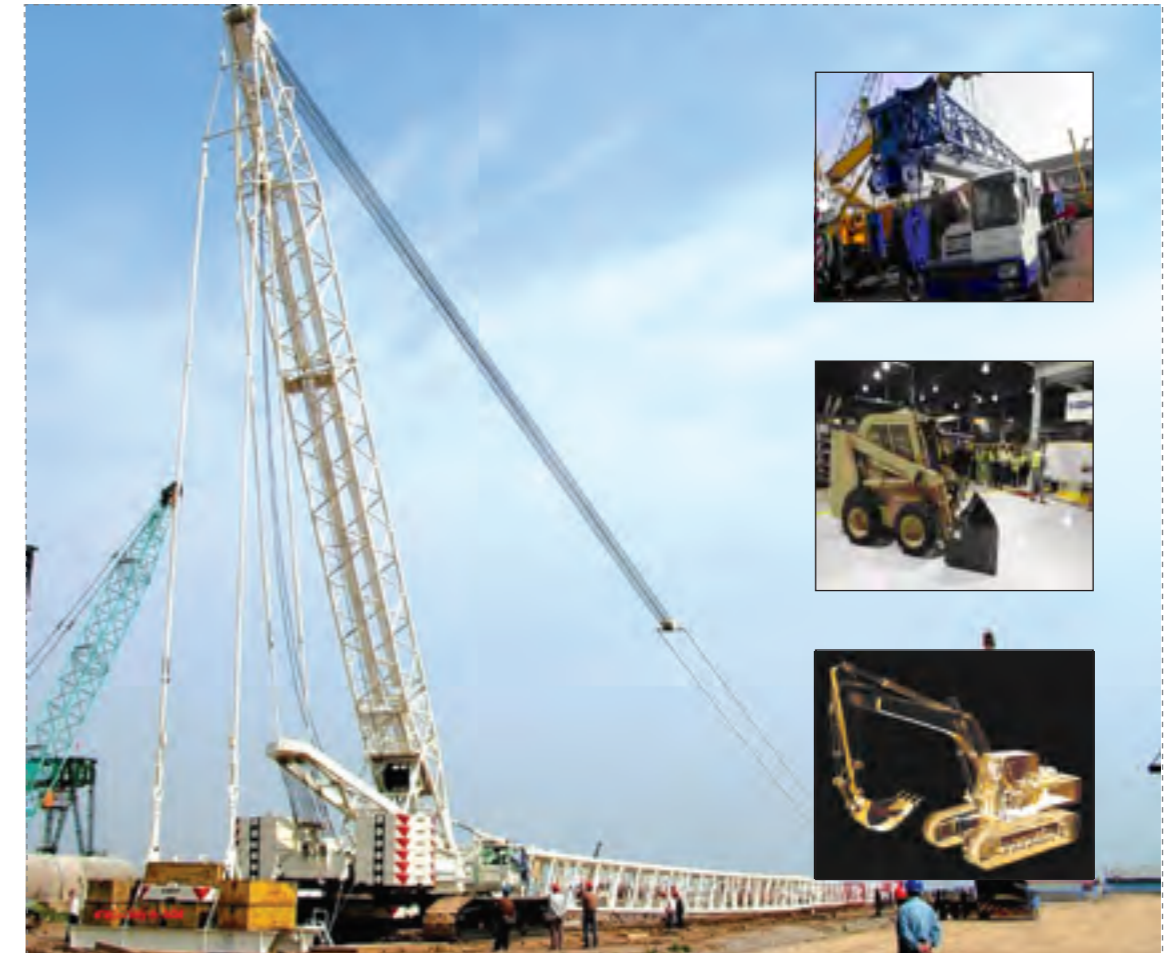


- **Featured WD Products:** precision spindle bearings, precision cylindrical roller bearings, precision taper roller bearings, spherical roller bearings, precision thrust ball bearings, precision deep groove ball bearings.



Engineering machinery industry

- excavating machinery, loading machinery, bulldozer, scrapers, road roller, etc.



- **Featured WD Products:** precision cylindrical roller bearings, precision taper roller bearings, precision spherical roller bearings, slewing bearings, needle roller bearings, spherical plain bearings, double row cylindrical roller bearings, YRT rotary table bearings, etc.



TYPICAL APPLICATIONS

The steel industry

- raw material processing equipment, steel-making equipment, continuous casting machine, hot mill, cold mill, etc



- **Featured WD Products:** rotary table bearings, spherical roller bearings, double row seal cylindrical roller bearings, four row cylindrical roller bearings, four row tapered roller bearings, supporting roller bearings, precision rolling mill bearings, etc.



Four Row Tapered Roller Bearings



Supporting Roller Bearings



Sendzimir Bearing

WD BEARINGS ARE AVAILABLE IN THE FOLLOWING MARKETS



SALES AGENTS WANTED

Please contact us by email: sales@wd-bearing.com